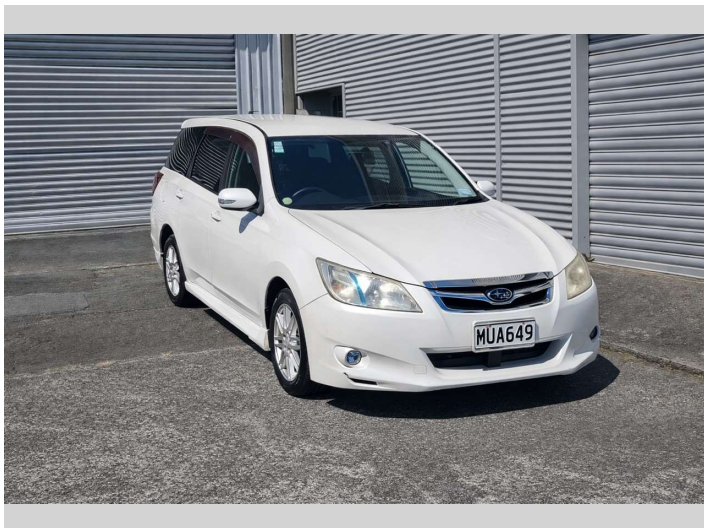



# 2010 Subaru Exiga




**Purchase Price** **POA**  
Includes GST, Registration & Licensing

Finance may be available on this vehicle. Ask one of our friendly staff for more information.



Gain peace of mind with Mechanical Breakdown Insurance. **Ask us how.**



**Top features**

None Listed

Body Style  
**Station Wagon**

Odometer  
**174,109 km**

Engine  
**1990 cc, Internal Combustion**


Fuel Type  
**Petrol**

Transmission  
**CVT**

Wheels  
-

VIN  
**7AT0GF1RX19010304**

Interior  
-

Safety  
  
Based on 2025 UCSR rating for 09-14 models

Reg No.  
**MUA649**

Ext Colour  
**White**

History  
**Ex-Overseas**

Seats  
**7 seats**

CO2 Emissions  
**★★★★☆**  
**199 grams/km**

Energy Economy  
**★★☆☆☆☆**  
**Annual fuel cost of \$3,250**  
**8.3L per 100km**

Cost per year is an estimate based on petrol price of \$2.80 per litre and an average distance of 14000 km. Emissions and Energy Economy figures standardised to 3P WLTP.

**Stock ID: 1048**



Wholesale Cars | Phone 020 4082 2411 | Email rocky@wholesalecars.co.nz  
16 Fort Richard Road, Otahuhu, Auckland 1062, New Zealand  
www.wholesalecars.co.nz